

Color Essence™ | The Azrock® Collection

Technical Data	Standards	Color Essence
Type of Floor Covering		Vinyl Enhanced Tile
Classification	ASTM F 1066	Meets Requirements
Polyurethane Reinforced		Tritonite®
Total Thickness		1/8" (3.2 mm)
Static Load Limit	ASTM F 970†	400 psi (modified)
Tile Size		12" x 12" (30.5 cm x 30.5 cm)
Weight/sq. ft./m²		1.20 lbs sq. ft. (12.92 lbs. m²)
Carton Quantity		45 tiles = 45 sq. ft. (4.18 m²)
Carton Weight		54 lbs (24.5 kg)
Flammability	ASTM E 648	Class 1 >0.45 CRF
Smoke Density	ASTM E 662	<450
Slip Resistance SCOF	ADA Compliant	Both smooth and slip resistant (SR)
Chemical Resistance		Good
Colors		51 Smooth, 6 Slip Resistant
Warranty		10 Year LIMITED Warranty. See www.tarkettna.com for complete warranty information.
Maintenance		Reduced Finish Maintenance / 2-3 coats of finish*

*Depending upon use of the floor.

† Static load limit per ASTM 970 modified by specifying a higher load.

Please visit tarkettna.com for the most updated specifications, and installation, cleaning and maintenance instructions.

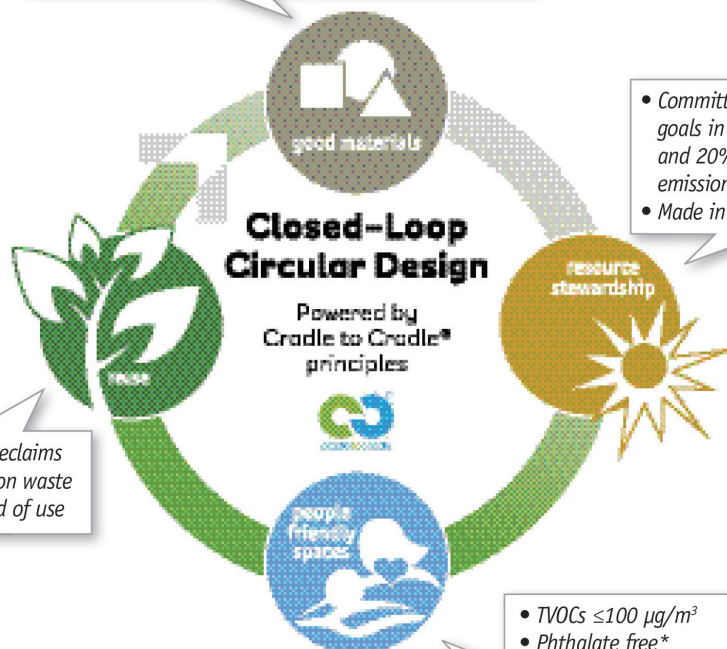
How to Order: Smooth: CE(XXX) Color Number Slip Resistant: CE(XXX) Color Number SR



MADE IN USA



- Materials safe for the environment and safe for people
- Contains 74% natural limestone
- Contains 23% pre-consumer recycled content
- Contains 6% post-consumer recycled content



- Committed to 5% yearly reduction goals in water, waste and energy and 20% in greenhouse gas emissions by 2020.
- Made in the U.S.A.

- ReStart® program reclaims samples, installation waste and flooring at end of use

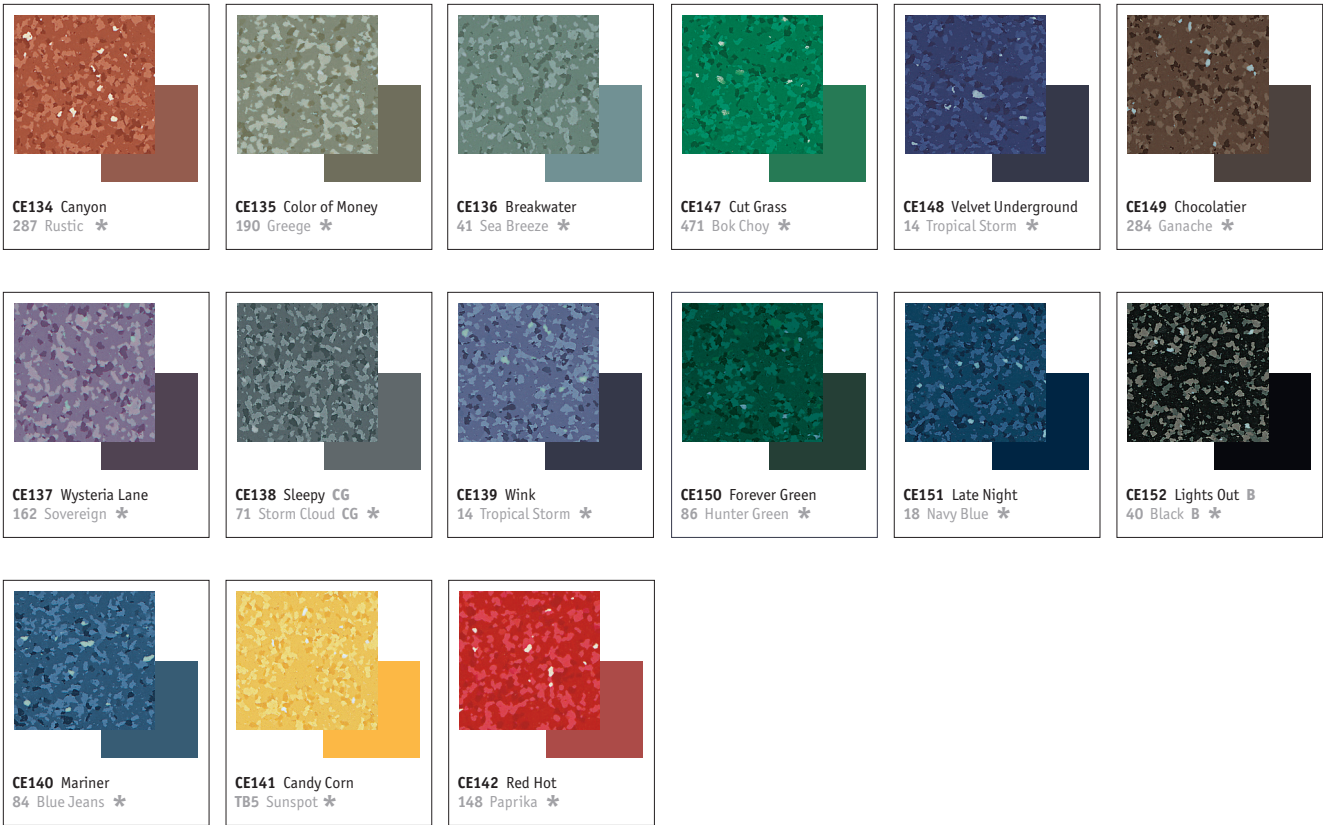
- TVOCs ≤100 µg/m³
- Phthalate free*
- FloorScore® certified meeting CA01350
- Low-emitting materials

*except post-consumer recycled content

The Johnsonite® System includes accessories, including transitions, finishing borders (wall base), cove fillers and caps to complete your flooring design and installation.



*Suggested Johnsonite® colors for finishing borders (wall base).



*Suggested Johnsonite® colors for finishing borders (wall base).

VINYL ENHANCED TILE FLOORING

Azterra™, Color Essence™, and Color Essence SR™

Maintenance Instructions

INTRODUCTION

Tarkett Vinyl Enhanced Tile has a durable factory-applied vinyl surface treatment providing reduced maintenance costs. Three coats of floor finish must be applied prior to placing the floor into service. **NOTE:** In areas with heavy traffic or with consistent chair/desk sliding such as classrooms, corridors, and cafeterias, an additional 1 - 2 coats of floor finish should be applied.

These instructions are written as a guide to be used by professionals for the proper care and maintenance of the floor. Utilizing these guidelines, with the cleaning products listed below, will ease the maintenance process and provide the customer with a product that will perform to its intended purpose. Always visit www.tarkettna.com for the most current installation and maintenance instructions. Technical videos and tip sheets are also available. Contact Tarkett Technical Services at (800)-899-8916 ext. 9297 with any questions.

POST INSTALLATION / INITIAL CLEANING

Job site conditions will cause grit and dirt to accumulate. Initial cleaning must not be performed until 72 hours after installation. However, it is necessary the floor be swept and protected until maintenance begins.

1. Thoroughly sweep or vacuum the flooring to remove all loose dirt and grit.
2. Prepare a cleaning solution using one of the recommended pH neutral cleaners identified on the reference chart below.
3. The dilution ratio depends on light to heavy soil conditions. Follow the manufacturer's label instructions.
4. Damp mop the cleaning solution onto the floor with a nylon or rayon mop, or pump type sprayer. Apply only enough solution to keep the pad lubricated. **DO NOT FLOOD THE FLOOR.**
5. Let the cleaning solution dwell for 5 to 15 minutes (dwell time is based on soil conditions of the floor). **DO NOT ALLOW THE SOLUTION TO DRY.**
6. Scrub the flooring using a single disc rotary machine (175 – 350 RPM) equipped with a 3M 5300 blue pad or equivalent. **DO NOT USE BROWN OR BLACK PADS.**
NOTE: A 22 to 28 gauge nylon bristle brush must be used on slip resistant tiles ("SR").
7. Move the scrubbing machine at a pace that will allow the pad to do the work. Overlap each pass by half to ensure complete coverage.
8. Remove the cleaning solution using a wet vacuum or a mop.
9. Rinse the floor thoroughly with clean water.
10. Allow the flooring to dry completely.
NOTE: The cleaning process may need to be repeated on heavily soiled floors.
11. Three coats of a recommended floor finish must be applied prior to placing the floor into service. Apply the finish to the floor according to the manufacturer's label instructions.
NOTE: In areas with heavy traffic or with consistent chair/desk sliding such as classrooms, corridors, and cafeterias, an additional 1 – 2 coats of floor finish should be applied.
12. Allow the floor finish to dry completely between coats.
13. Restrict all traffic until the floor finish has dried completely.

PREVENTIVE CARE

1. An effective barrier matting system should be installed at all entrances to reduce cleaning costs and extend the life of the floor.
2. Protect the flooring from damage by using good quality protective glides and casters for chairs, tables, and other furniture using products designed for resilient floors. Caster or wheel damage, in work stations or similar environments, can be avoided with the use of chair pads.
3. Do NOT use steel wool, strong solvents (gasoline, turpentine, and acetone), or all-purpose cleaners (Lestoil, Top Job, etc. and similar products).
4. Do NOT use sweeping compounds or mops treated with petroleum solvents, silicone compounds or loose abrasives that damage the flooring.
5. Do NOT use disinfectant cleaners and insecticide sprays containing oil or solvents that may settle on the floor in sufficient quantity to discolor, cause slipperiness, and harm the flooring.

ROUTINE / DAILY CLEANING

It is very important to clean the flooring at a frequency consistent with the amount and type of traffic and soil conditions. Daily cleaning is recommended.

1. Thoroughly sweep or vacuum the flooring to remove all loose dirt and grit.
2. Prepare a cleaning solution using one of the recommended pH neutral cleaners identified on the reference chart below.
3. The dilution ratio depends on light to heavy soil conditions. Follow the manufacturer's label instructions.
4. Damp mop the cleaning solution onto the floor with a nylon or rayon mop, or utilize an auto scrubber equipped with a 3M 5100 red pad or equivalent. Check the manufacturer's label instructions for proper use. **DO NOT FLOOD THE FLOOR.**
5. Allow the flooring to dry completely.
6. Remove minor stains and scuffs in conjunction with the damp mopping. Use a white or red pad if required.

PERIODIC / DEEP CLEANING

When Routine / Daily Cleaning no longer provides adequate results, a more aggressive deep cleaning is required to thoroughly clean the floor.

1. Thoroughly sweep or vacuum the flooring to remove all loose dirt and grit.
2. Prepare a cleaning solution using one of the recommended pH neutral cleaners identified on the reference chart below.
3. The dilution ratio depends on light to heavy soil conditions. Follow the manufacturer's label instructions.
4. Apply the cleaning solution with a nylon or rayon mop, or pump type sprayer. **DO NOT FLOOD THE FLOOR.**



THE ULTIMATE
FLOORING EXPERIENCE

5. Let the cleaning solution dwell for 5 to 15 minutes (dwell time is based on soil conditions of the floor). **DO NOT ALLOW THE SOLUTION TO DRY.**
6. Scrub the flooring using a single disc rotary machine (175 – 350 RPM) equipped with a 3M 5100 red pad or equivalent. **DO NOT USE BROWN OR BLACK PADS.**

NOTE: A 22 to 28 gauge nylon bristle brush must be used on slip resistant tiles ("SR").

7. Remove the cleaning solution using a wet vacuum or a mop.
8. Rinse the floor thoroughly with clean water.
9. Allow the flooring to dry completely.

NOTE: The cleaning process may need to be repeated on heavily soiled floors.

FLOOR FINISH RESTORATIVE PROCEDURE

When the floors gloss level appears worn or uneven due to traffic the floor finish can be removed and reapplied to restore the floors appearance.

Floor Finish Removal:

1. Thoroughly sweep or vacuum the flooring to remove all loose dirt and grit.
2. Prepare a stripping solution using one of the recommended strippers identified on the reference chart below. Follow the manufacturer's label instructions for proper mixing ratios and use.
3. Apply the stripping solution with a nylon or rayon mop, or pump type sprayer. **DO NOT FLOOD THE FLOOR.**
4. Let the stripping solution dwell for 5 to 15 minutes. **DO NOT ALLOW THE SOLUTION TO DRY.**

5. Scrub the floor using a single-disc rotary machine (175-350 RPM) equipped with a 3M 5300 blue pad or equivalent. **DO NOT USE BROWN OR BLACK PADS.**

NOTE: A 22 to 28 gauge nylon bristle brush must be used on slip resistant tiles ("SR").

6. Remove the stripping solution with a wet vacuum or a mop.
7. Thoroughly rinse the floor and allow it to dry completely.
8. Repeat the stripping process if necessary.
9. Apply the new floor finish as outlined below.

Application of floor finish:

1. Perform a stripping procedure as outlined above in Floor Finish Removal.
2. Select a floor finish suitable for use on resilient flooring. Refer to the maintenance product reference chart below.
3. Apply the floor finish to the floor according to the manufacturer's label instructions.

4. Apply a minimum of three coats of finish. Apply additional coats as recommended or required.

5. The floor finish must dry completely between coats.
6. Restrict all traffic until the floor finish has dried completely.

OPTIONAL Floor Finish Restorative Procedures

In lieu of stripping and reapplication, to reduce the cost of chemicals and manpower, the following options can be utilized.

Scrub and Re-coat: This procedure will remove 1 to 2 coats of existing floor finish, therefore 4 to 5 coats of floor finish must have been previously applied.

1. Thoroughly sweep or vacuum the flooring to remove all loose dirt and grit.
2. Prepare a cleaning solution using one of the recommended pH neutral cleaners identified on the reference chart below.
3. Follow the manufacturer's label instructions for proper mixing ratio.
4. Apply the cleaning solution with a nylon or rayon mop, or pump type sprayer. **DO NOT FLOOD THE FLOOR.**
5. Let the cleaning solution dwell for 5 to 15 minutes. **DO NOT ALLOW THE SOLUTION TO DRY.**
6. Scrub the floor using a single-disc rotary machine (175-350 RPM)

equipped with a 3M 5300 blue pad or equivalent. **DO NOT USE BROWN OR BLACK PADS.**

NOTE: A 22 to 28 gauge nylon bristle brush must be used on slip resistant tiles ("SR").

7. Remove the cleaning solution with a wet vacuum or a mop.
8. Thoroughly rinse the floor and allow it to dry completely.
9. Apply 2 coats of new floor finish according to the manufacturer's label instructions
10. The floor finish must dry completely between coats.
11. Restrict all traffic until the floor finish has dried completely.

Spray Buffing:

1. Floor must be clean prior to buffing.
2. Apply the spray buffing solution to workable areas with a spray bottle.

3. Buff the floor using a single disc, slow speed, rotary machine (175 - 350 RPM) equipped with a 3M 4100 white buffing pad or equivalent.
4. Continue procedure until desired level of gloss has been achieved

Burnishing:

1. Floor must be clean prior to buffing.
2. Burnish the floor using a single disc, high speed, rotary machine (1500 - 2000 RPM) equipped with a 3M 3200 high speed burnishing pad or equivalent.

3. Continue procedure until desired level of gloss has been achieved.
NOTE: BURNISHING NEEDS SPECIAL CARE TO AVOID DAMAGES.

SPECIAL ATTENTION

Color Essence™: Color Essence, like solid-colored floors of any composition, can show scratching, scuffing, marring and soiling more readily than patterned materials. This can also be the case with light indentations from furniture with legs, feet or casters left on the tile for a period of time. None of these are considered to be defects of the tile as scuffing and soiling can be removed with proper maintenance, while scratching and marring may occur due to inappropriate finishing/maintenance. In the case of indentations, utilizing proper protective feet and casters that are approved for resilient flooring will reduce the footprint left by the furniture.

Maintenance Product Reference Chart

NOTE: Always follow the manufactures label for proper mixing ratios and use.

	Initial Cleaning	Daily Cleaning	Deep Cleaning	Finish	Stripper
Buckeye www.buckeyeinternational.com 1-800-321-2583	Straight Up	Crossroads	Crossroads	LiquiMax	Juggernaut
				Lucent	
Diversey www.diversey.com 1-800-558-2332	Profi	Profi	Profi	Signature	Bravo 1500+
	GP Forward	GP Forward	GP Forward	Complete	
	Prominence	Prominence	Prominence	High Mileage	
Certified Green Products		Stride	Stride	Aquaria	Pro Strip SC
Hillyard www.hillyard.com 1-800-365-1555	Super Shine All	Renovator	Renovator	Super Hil-Brite	Arsenal
				One Plus	
Spartan Chemical www.spartanchemical.com 1-800-537-8990	Tribase	Tribase	Tribase	White Sun	Step Down
		Damp Mop	Damp Mop	The Fixx	Endura Strip
Certified Green Products	Green Solutions Industrial Cleaner	Green Solutions All Purpose Cleaner	Green Solutions All Purpose Cleaner	FloorFront	Green Solutions Floor Finish Remover
XL North www.xlnorth.com 1-888-530-2259	XL APC All Purpose Cleaner	XL APC All Purpose Cleaner	XL APC All Purpose Cleaner	XL 25	XL FS
				XL 18	
				XL UF	
				XL Matte	



THE ULTIMATE
FLOORING EXPERIENCE

Technical Services Department
30000 Aurora Road, Solon, Ohio 44139
(800) 899-8916 ext 9297
Fax (440) 632-5643
email: info@johnsonite.com
www.tarkettna.com